

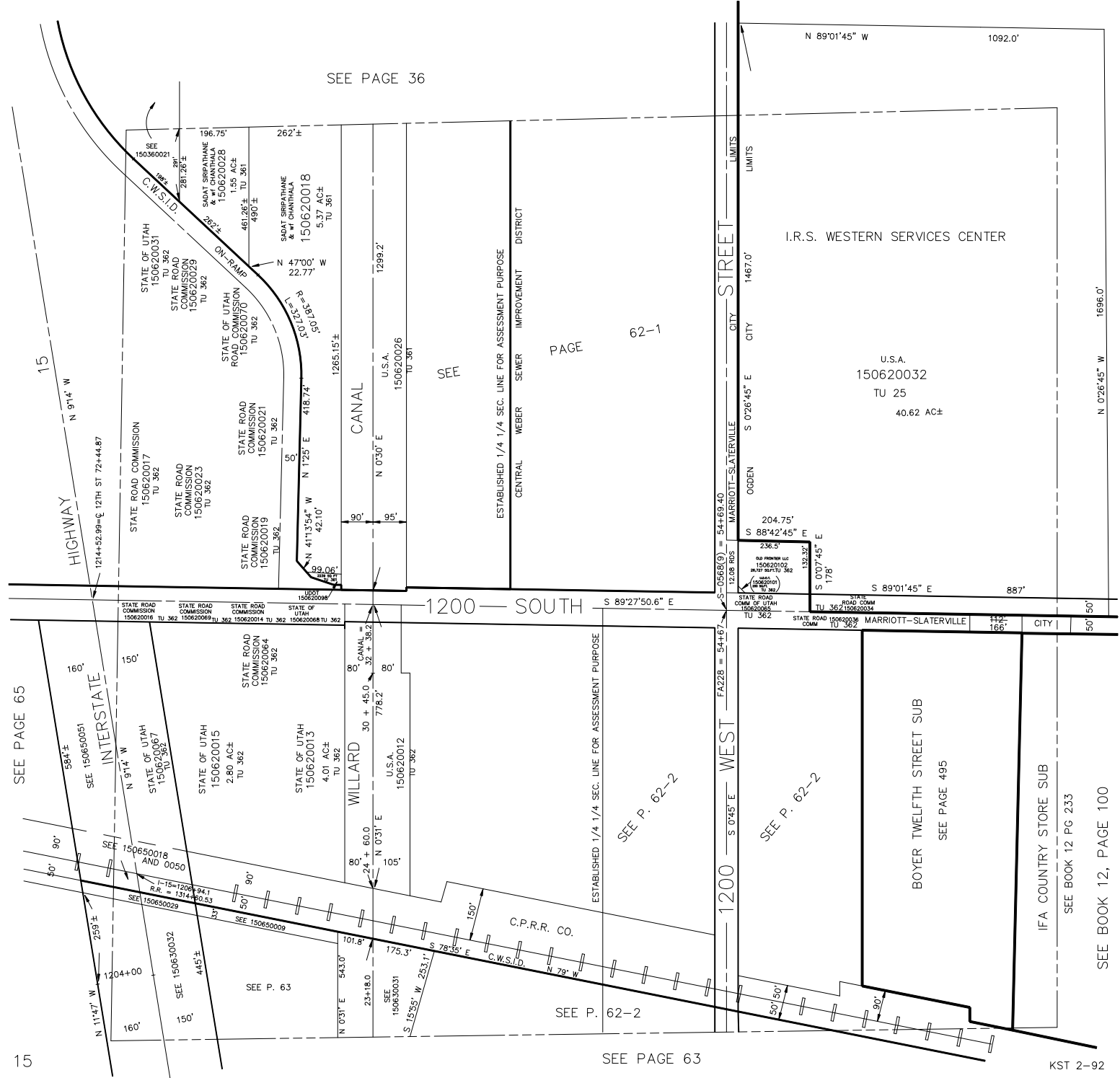
NE 1/4
SECTION 24, T.6N., R.2W., S.L.B. & M.

IN MARRIOTT-SLATERVILLE CITY, OGDEN CITY & WEBER COUNTY

TAXING UNITS: 25, 361, 362,

SCALE 1" = 200'

SEE PAGE 36



PAGE 62-1

SEE

ESTABLISHED 1/4 1/4 SEC. LINE FOR ASSESSMENT PURPOSE
CENTRAL WEBER SEWER IMPROVEMENT DISTRICT

1200 SOUTH
1200 WEST
MARRIOTT-SLATERVILLE CITY
OGDEN CITY
LIMITS

I.R.S. WESTERN SERVICES CENTER

U.S.A.
150620032
TU 25
40.62 AC±

BOYER TWELFTH STREET SUB
SEE PAGE 495

IFA COUNTRY STORE SUB
SEE BOOK 12 PG 233

SEE BOOK 12, PAGE 100

SEE PAGE 65

SEE P. 62-2

SEE P. 62-2

SEE P. 62-2

SEE PAGE 63

15